

Water Bath

High-accuracy Water Bath

Model: **WD-D16**



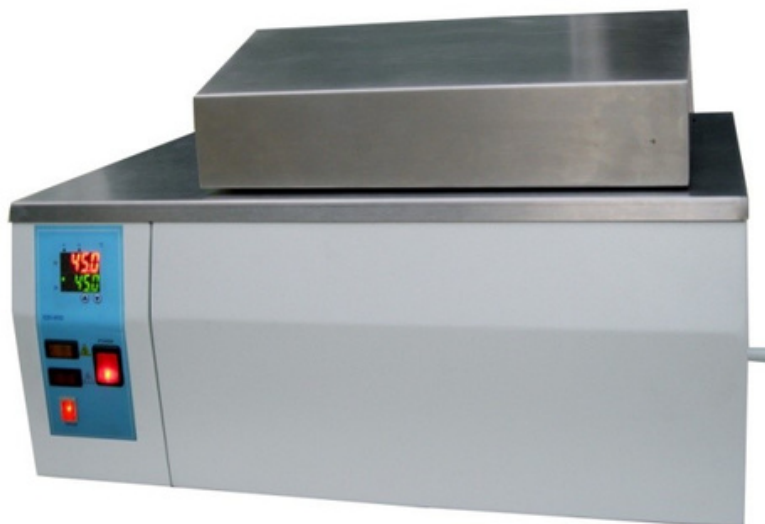
T. max: 100°C

Main Feature

- Digital Microprocessor Controller
- Temperature Resolution: +/- 0.1°C
- Precision: +/- 0.5°C
- Working Temperature Range: at least 5°C above ambient to 100°C
- Over-temperature thermostat and a low-liquid cutoff
- Stainless steel interior
- Circulation system (Option)
- Product made in Thailand

Specifications

Model	Max Temp. (°C)	Volume (L)	Interior Dimensions			Voltage Electronic Load
			Height (cm)	Width (cm)	Length (cm)	
WD-D16	100	16	30	16	35	220V/55 HZ



WD-D16